

PROGETTO di trasformazione in variante al P.R.G.
ex convento Suore Cappuccine di Madre Rubatto
sito in p.zza San Bernardo – SANREMO

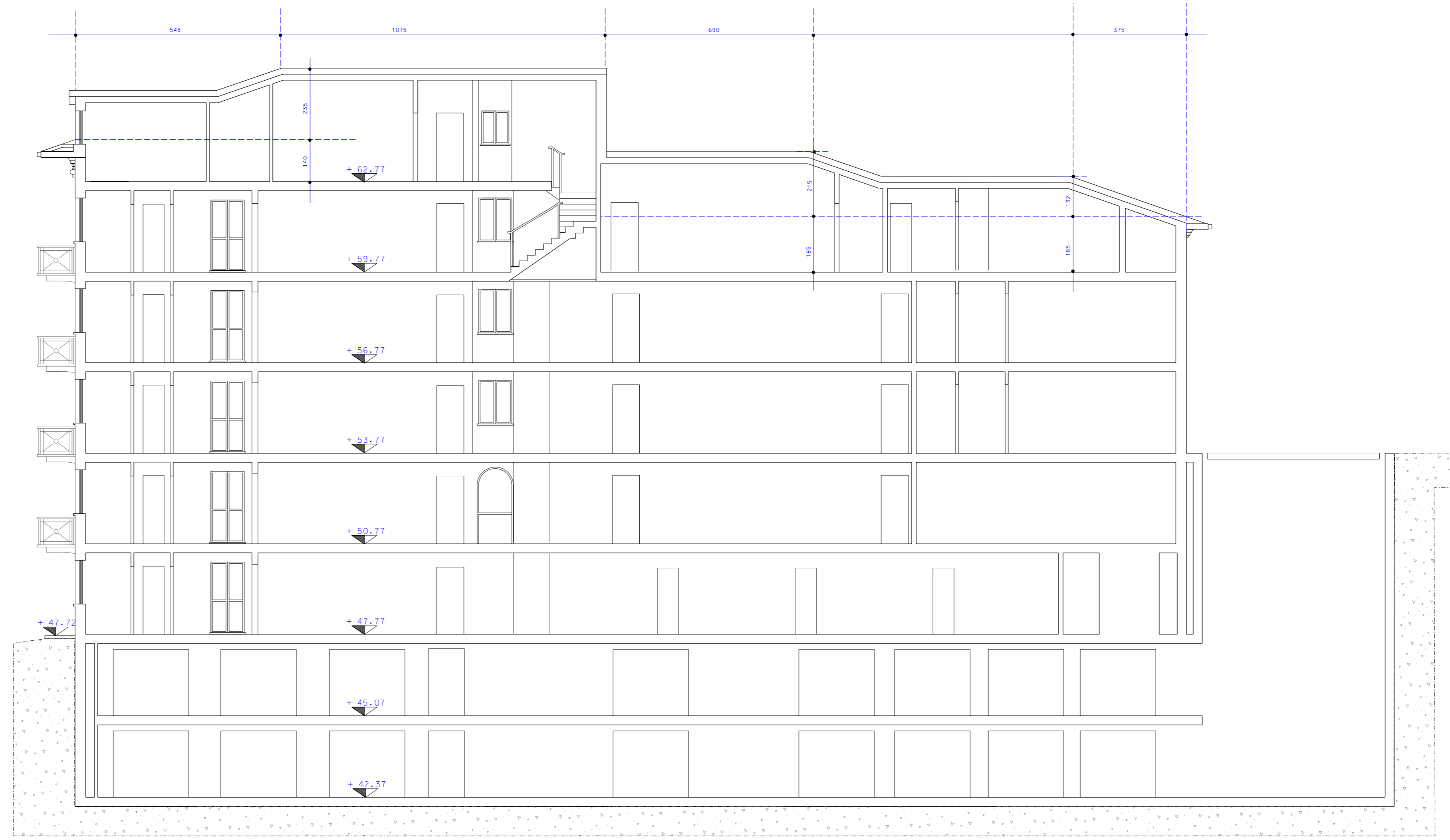
RICHIEDENTE: Soc. GEORGIA S.r.l.
con sede in Acqui Terme (AL)
Via Morandi, 2
C.F.: 02130710060

PROGETTISTI: Arch. SERGIO MAIGA
Arch. MICOL MAIGA
Arch. SOFIA TONEGUTTI
Via Gioberti, 3 – SANREMO (IM)
TEL. 0184535854

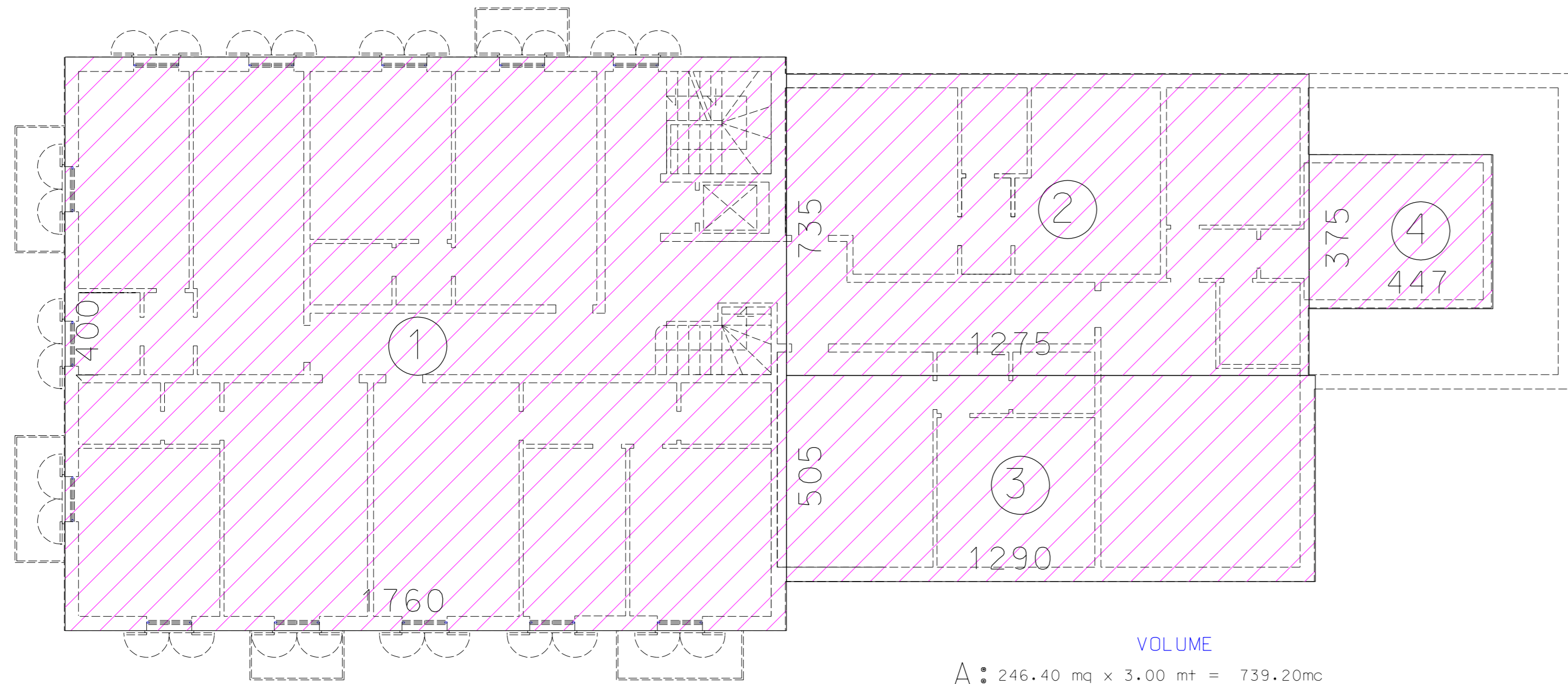
data 30.11.2016 scala 1:100 TAVOLA

Volume fabbricato principale
e superficie lorda.
PROGETTO – LOTTO 1

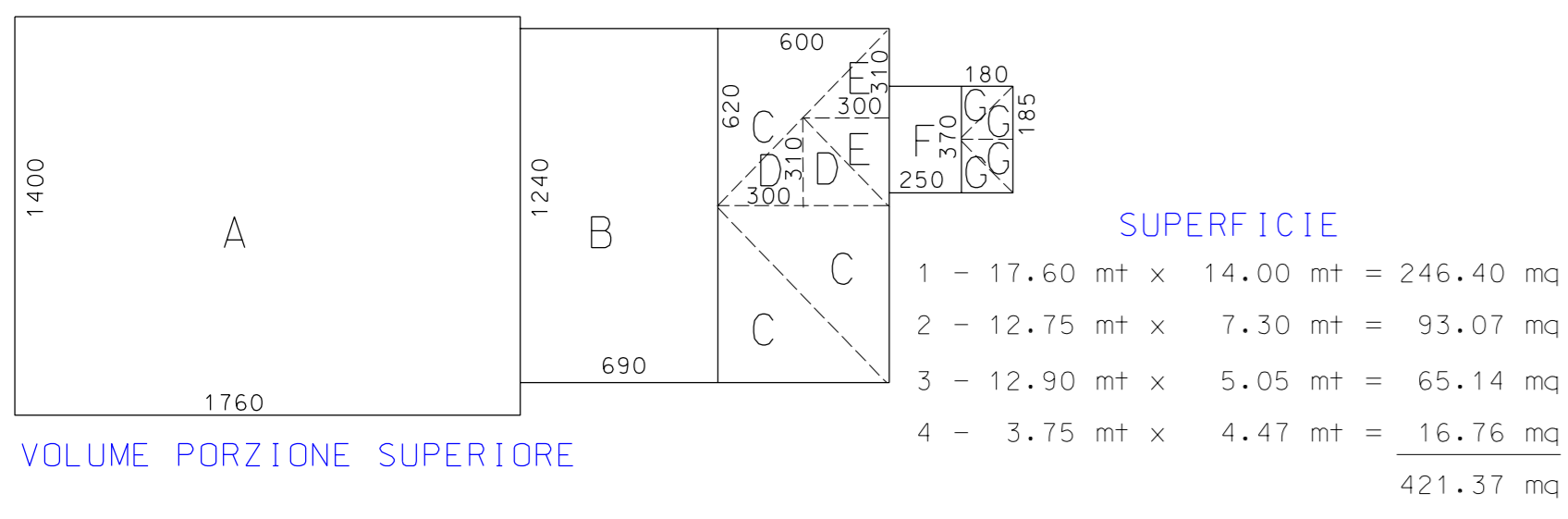
24f



Sezione B B'



Pianta piano quarto

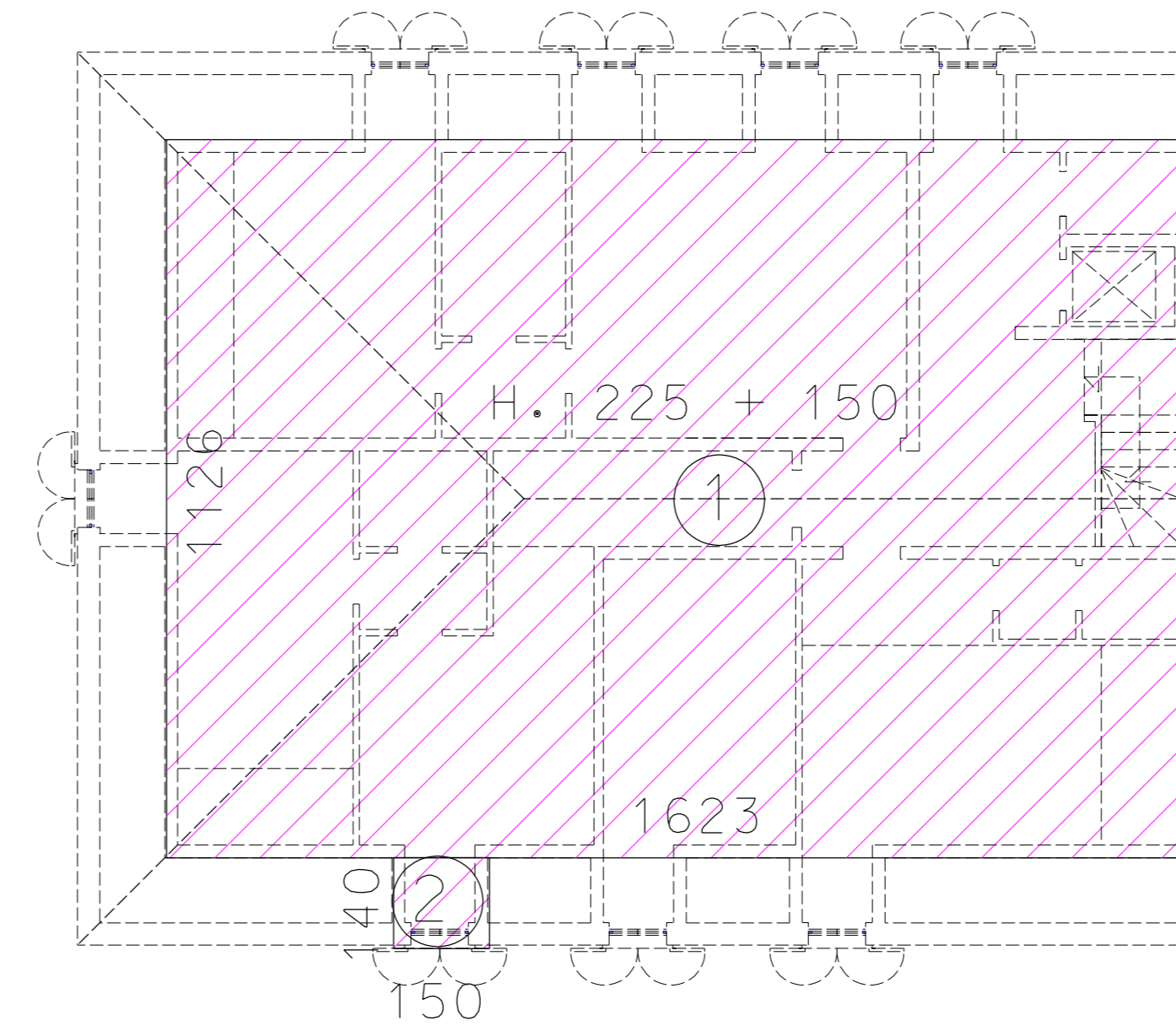


VOLUME
A: 246.40 mq x 3.00 mt = 739.20mc

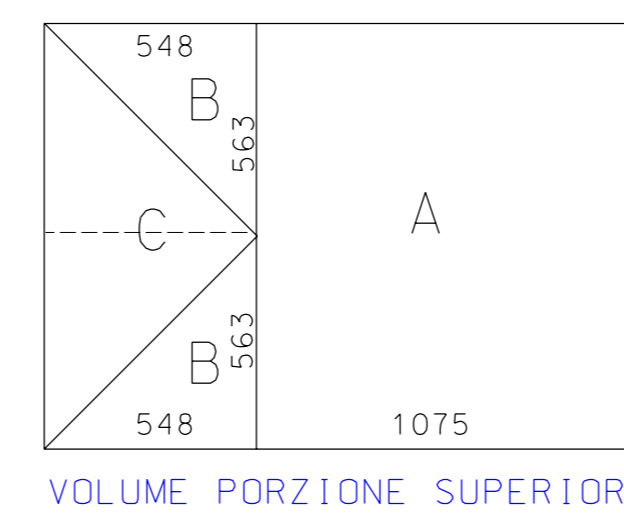
VOLUME PORZIONE SUPERIORE
B: 12.40 mt x 6.90 mt x 2.15 mt / 2 = 91.98 mc
C: ((16.20 mt x 6.00 mt) / 2) x 2.15 mt / 3 = 13.33 mc x 3 = 39.99 mc
D: ((13.00 mt x 3.10 mt) / 2) x 2.15 mt / 3 = 3.33 mc x 2 = 6.66 mc
E: ((13.00 mt x 3.10 mt) / 2) x 1.32 mt / 3 = 2.04 mc x 2 = 4.09 mc
F: 3.70 mt x 2.50 mt x 1.32 mt / 2 = 6.10 mc
G: ((1.80 mt x 1.85 mt) / 2) x 1.32 mt / 3 = 0.73 mc x 4 = 2.93 mc

VOLUME SOTTOSTANTE ALLA GRONDA
B: 12.40 mt x 6.90 mt x 1.85 mt = 158.28 mc
C: ((16.20 mt x 6.00 mt) x 3) x 1.85 mt = 206.46 mc
D: (3.00 mt x 3.10 mt) x 1.85 mt = 17.20 mc
E: 3.00 mt x 3.10 mt x 1.85 mt = 17.20 mc
F: 3.70 mt x 2.50 mt x 1.85 mt = 17.11mc
G: 1.80 mt x 3.70 mt x 1.85 mt = 12.32 mc

TOTALE
739.20 mc + 91.98 mc + 39.99 mc + 6.66 mc + 4.09 mc + 6.10 mc + 2.93 mc +
+ 158.28mc + 206.46 mc + 17.20 mc + 17.20 mc + 17.11 mc + 12.32 mc = 1304.16 mc



Pianta piano mansardato

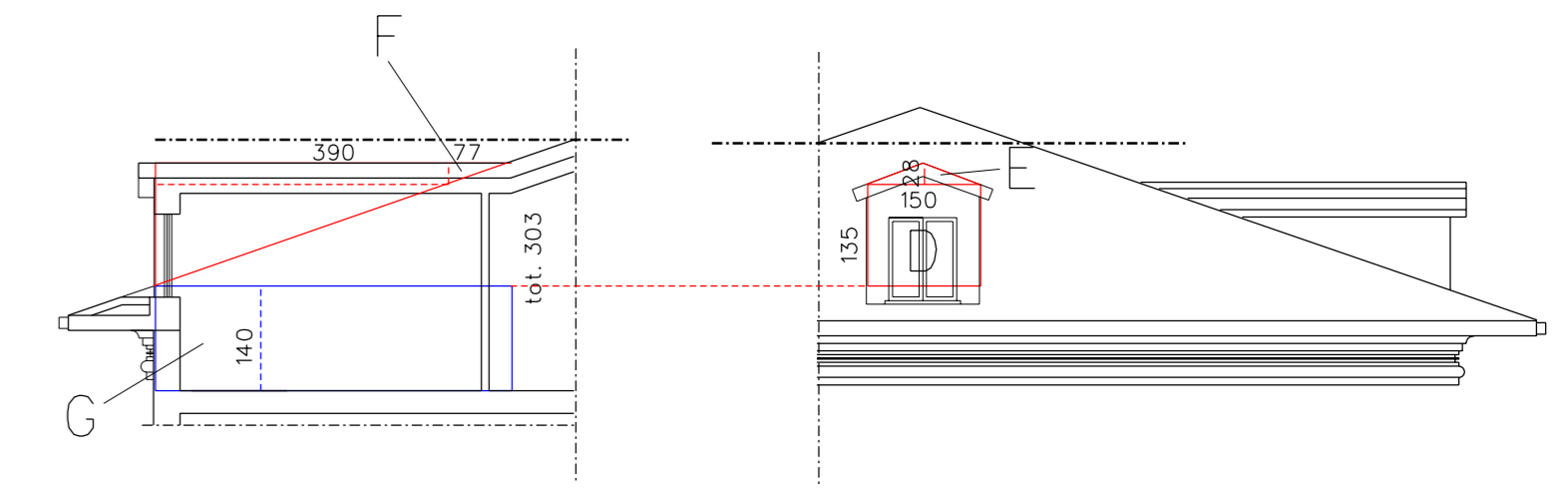


SUPERFICIE
1 - 16.23 mt x 11.26 mt = 182.75 mq

VOLUME PORZIONE SUPERIORE
A: 11.26 mt x 10.75 mt x 2.35 mt / 2 = 142.23 mc
B + C: ((15.48 mt x 5.63 mt) / 2) x 2.35 mt / 3 = 12.08 mc x 4 = 48.32 mc

VOLUME SOTTOSTANTE ALLA GRONDA
182.75 mq x 1.40 mt = 255.85 mc

TOTALE
142.23 mc + 48.32 mc + 255.85 mc = 446.40 mc

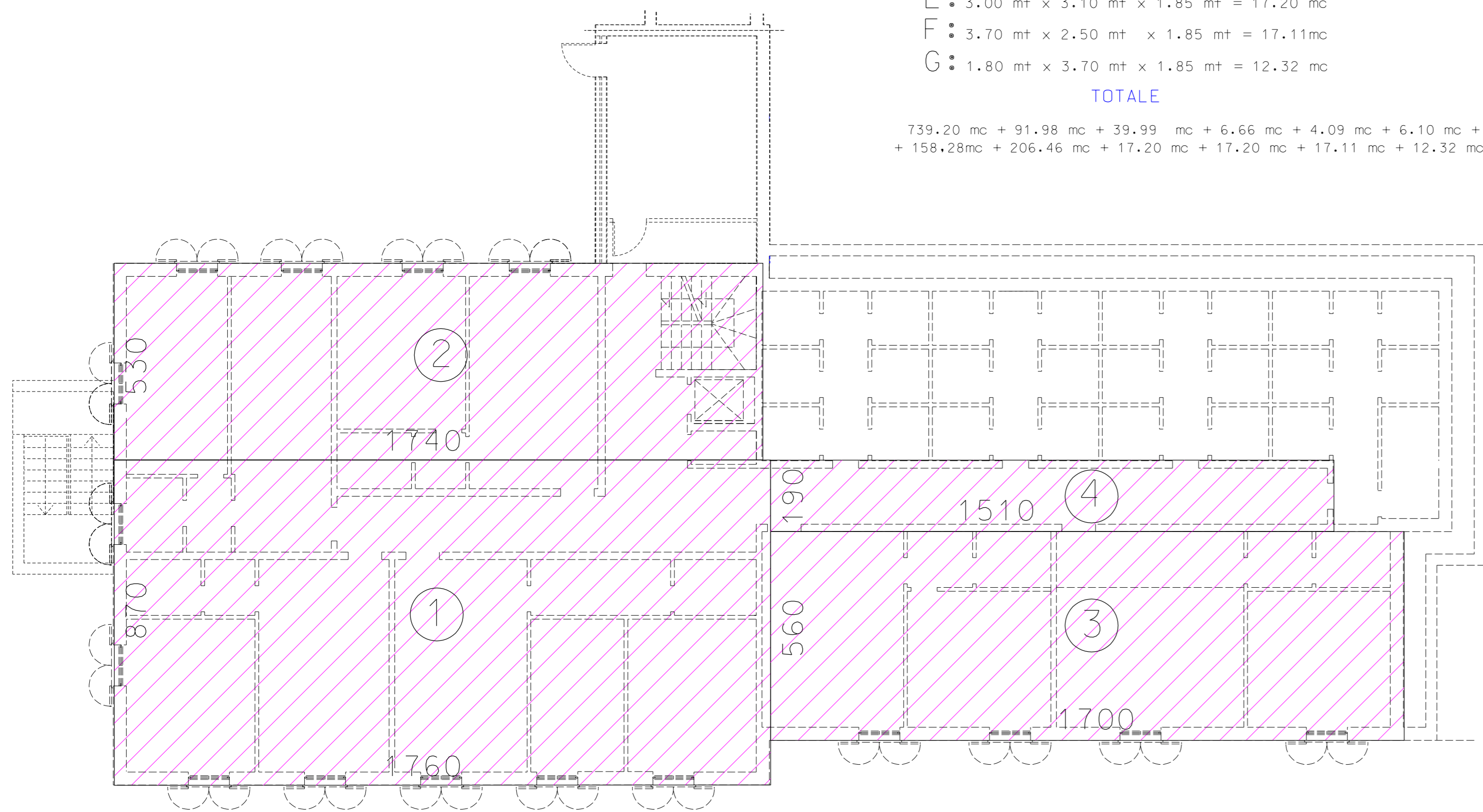


Particolare abbaino

SUPERFICIE ABBAINI
2 - 1.50 mt x 1.40 mt x 8 = 16.80 mq

VOLUME ABBAINI
D: 1.35 mt x 1.50 mt x 3.90 mt / 2 = 3.95 mc
E: 1.50 mt x 0.28 mt x 3.90 mt / 2 = 0.82 mc
F: 1.50 mt x 0.28 mt x 0.77 mt / 4 = 0.08 mc
G: 1.50 mt x 1.40 mt x 1.40 mt = 2.94 mc

TOTALE
7.79 mc x 8 = 62.32 mc

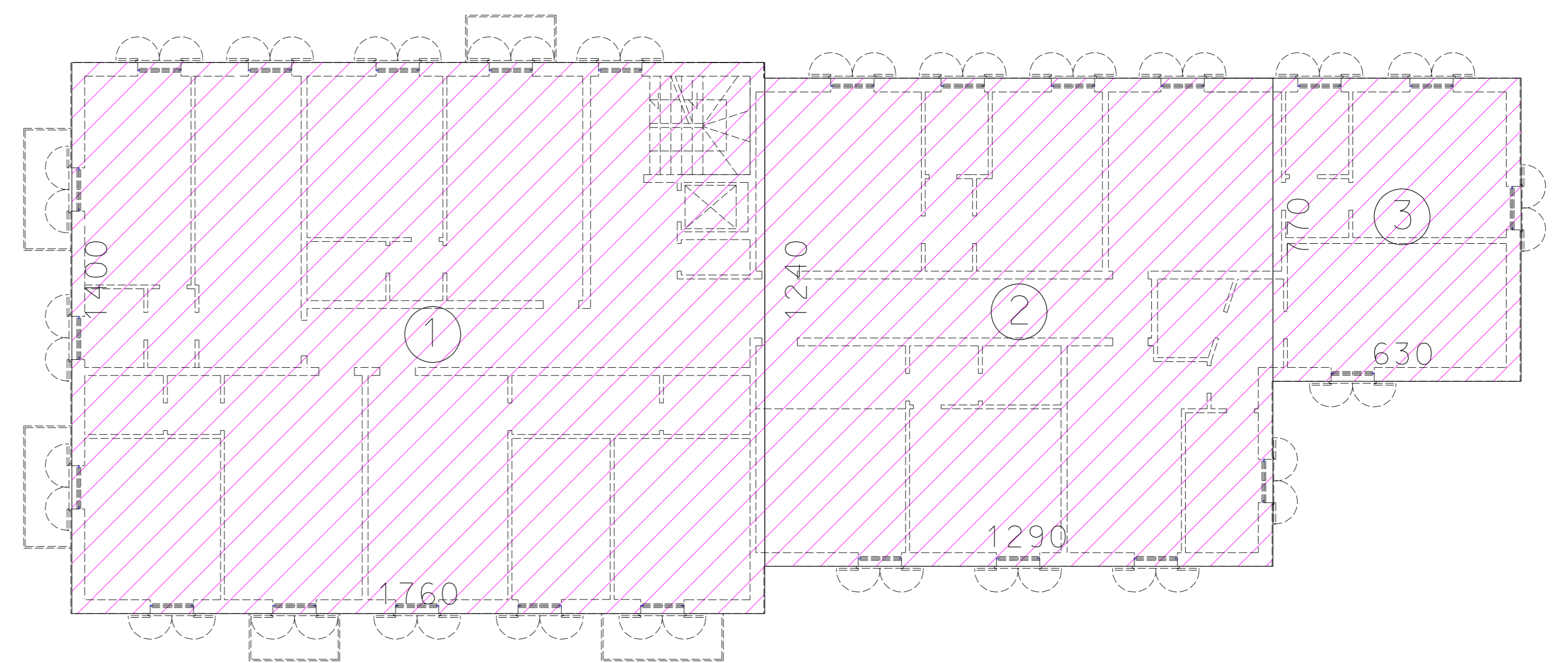


Pianta piano terra

SUPERFICIE
1 - 17.60 mt x 8.70 mt = 153.12 mq
2 - 17.40 mt x 5.30 mt = 92.22 mq
3 - 17.00 mt x 5.60 mt = 95.20 mq
4 - 15.10 mt x 1.90 mt = 28.69 mq

369.23 mq

VOLUME
369.23 mq x 3.00 mt = 1107.69 mc



Pianta piano tipo

SUPERFICIE
1 - 17.60 mt x 14.00 mt = 246.40 mq
2 - 12.90 mt x 12.40 mt = 159.96 mq
3 - 6.30 mt x 7.70 mt = 48.51 mq

454.87 mq

VOLUME
454.87 mq x 3.00 mt = 1364.61mc

SUPERFICIE LORDA TOTALE

PIANO TERRA + 3 PIANI TIPO + PIANO QUARTO + PIANO MANSARDA + ABBAINI
369.23 MQ + 3 x 454.87 MQ + 421.37 MQ + 182.75 MQ + 16.80 MQ = 2354.76 MQ

VOLUME LORDO URBANISTICO TOTALE

PIANO TERRA + 3 PIANI TIPO + PIANO QUARTO + PIANO MANSARDA + ABBAINI
1107.69 MC + 3 x 1364.61 MC + 1319.52 MC + 446.40 MC + 62.32 MC = 7029.76 MC